



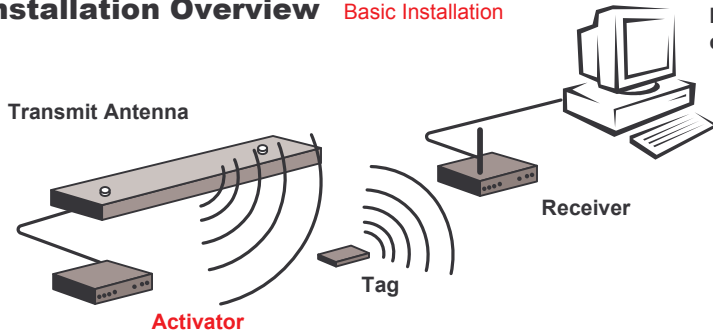
Quick Start

Hardware Installation



Dual Activator

Installation Overview Basic Installation



The **Dual Activator** connects directly to two transmit antennas to provide an activation signal that awakens tags as they pass through both antenna fields. The Dual Activator writes its own ID to the tag, which is then retransmitted, along with the tag's unique ID, to provide the tag's location at time of activation.

1

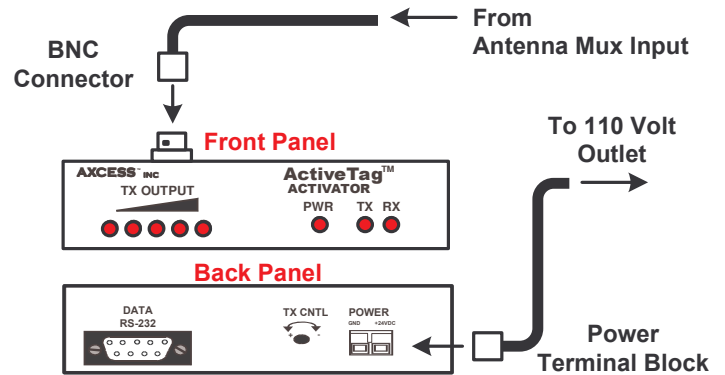
Supplying Power

Dual Activators come with a 24V DC, 1 Amp power transformer that plugs into a standard 110V AC outlet. The transformer is pre-wired into the terminal block at the factory. If uninterruptible power is an issue, a backup battery or UPS can be used.

- Step 1:** Connect antennas to Activator in order for the antenna auto-tune feature to function when power is applied.
- Step 2:** Plug the power terminal block into the back of the Activator.
- Step 3:** Plug the AC adapter into a 110-volt outlet.



When power is supplied, the LEDs labeled PWR & TX on the front of the unit will light up.



2

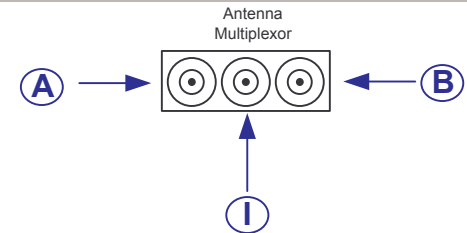
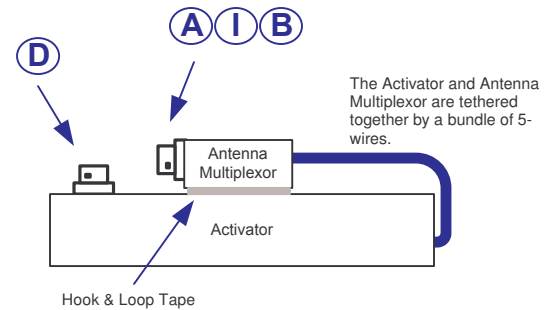
Connecting the Antenna Multiplexor

Components

- Activator
- Antenna Multiplexor
- 9 ¼-inch length of RG-58 Coaxial Cable

Connections

- Step 1:** Secure the Antenna Multiplexor to the Activator by attaching it to the top of the Activator to the hook and loop tape.
- Step 2:** Connect the provided 9 ¼-inch length of coax cable between points **I** and **D**. This from the Activator to the "Input" on the Multiplexor box.
- Step 3:** Connect the coaxial cable lead from Antenna A to BNC connector **A** on the Antenna Multiplexor.
- Step 4:** Connect the coaxial cable lead from Antenna B to BNC connector **B** on the Antenna Multiplexor.



If the tag, is placed within eight inches of the dual activator, either antenna or either of the RG-58 cables connected to the antennas – the tag will "activate" and transmit with one or both of the Activator IDs.

750.010.040 R02



3208 Commander Drive, Carrollton, Texas
75006
800.588.6080 / FAX: 972.407.9085
technical support: 800.577.6080
www.axcessinc.com



Dual Activator

3

Setting the Activator ID

An Activator ID can be set by 2 methods:

Serial commands (requires a computer or terminal device). This is the preferred method.

Hardware jumpers if no terminal is available. (Please see Installation Manual for information)

All Dual Activators have two IDs, by default these IDs are the same for every Dual Activator (033 & 034). Each Dual Activator in a multi-Activator application needs a **unique ID** to ensure proper behavior of the system. Input A be the smaller number, and Input B the larger number. (i.e. A would be 33 and B would be 34 by default)



If the Wiegand output is being used by the Network Receiver, the user must either enable the Wiegand List on the Network Receiver (Defaults to disabled) or use a Network Receiver for each field on the Dual Activator.

Required Materials

- PC or portable terminal with a free communications port.
- A terminal program for communicating with an Activator.
- A standard one-to-one (straight-through) PC modem RS-232 cable with a DB-9 male connector for the Receiver and suitable connector for the PC/terminal.



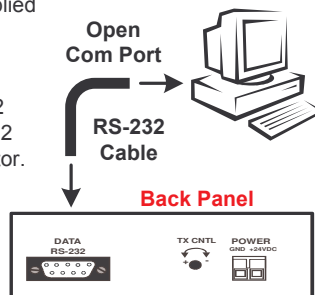
DO NOT use a null-modem cable or null-modem adapter.

Connecting a PC to the Activator

Step 1: Ensure power is applied to Dual Activator.


Step 2: Attach DB-9 male connector of RS-232 cable to Data RS-232 port on Dual Activator.

Step 3: Attach other end of RS-232 cable to an open com port on the PC.

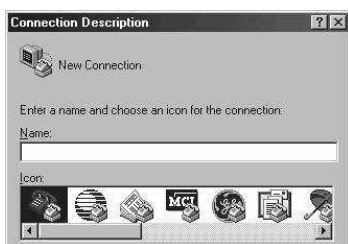


Communicating via HyperTerminal

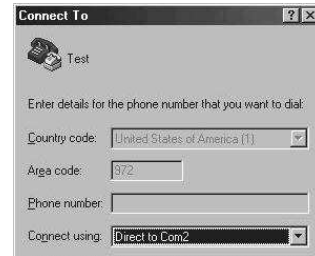
Step 1: From the Start button on the desktop, Select: **Programs**→ **Accessories**→ **Communications**→ **HyperTerminal**.

Step 2: Double-click the Hypertm.exe icon to launch application. 

Step 3: Enter any name for the connection and select the first icon. Click the **OK** button.



Step 4: Select the com port to which the Receiver or Activator is connected from the *Connect Using* drop-down list. Click the **OK** button.



Bits per second	19200
Data Bits	8
Parity	None
Stop Bits	1
Flow Control	None

Step 6: Click 

Changing the Dual Activator ID Number

If you type: 113!
Activator response: ID = 113



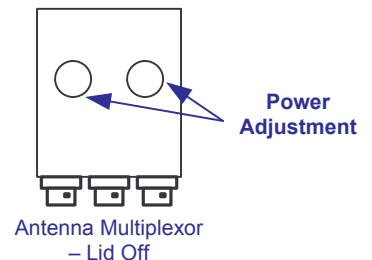
This will set the ID of the first Antenna field to 113, the second antenna field will be set to this ID plus one, in this case 114.

Adjusting the Power on the Antennas

Each antenna field on the dual activator may have its TX Output power level adjusted independently. When the lid from the Activator Multiplexor box is removed:



Each Antenna can be adjusted to ten power levels. Position Ten (default) is maximum power. Position One is minimum power.



4

Dual Activator Installation

Required Materials

- Power drill and bits
- Screwdrivers - Phillips & flathead
- Two screws (for wall mount)

Step 1: Install the Dual Activator as close as possible to the transmit antennas. (maximum distance of **50 feet** for best performance)

Step 2: Cycle the power on the Dual Activator after attaching the transmitting antennas in order for the antenna's auto-tune feature to function.

Step 3: Check the strength of the TX Output LEDs located on the front panel of the Activator. A minimum of 4 lit LEDs is desired.

TX OUTPUT

