



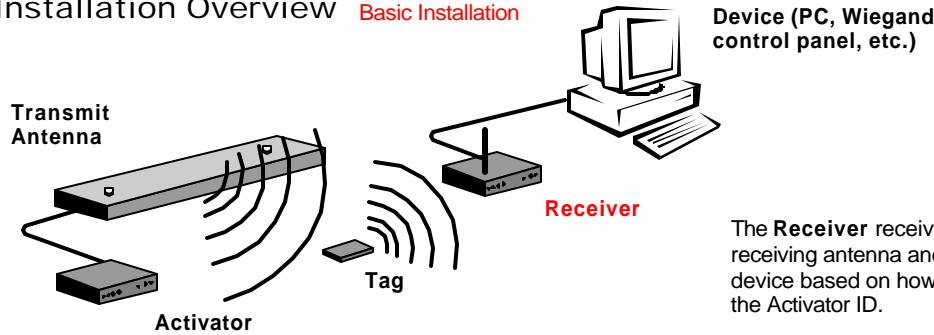
Quick Start

Hardware Installation



Receiver

Installation Overview **Basic Installation**



The **Receiver** receives the Tag's broadcast signal via its receiving antenna and sends the Tag data to a PC or control device based on how it has been programmed to respond to the Activator ID.

1 Connecting to a Wiegand Control Panel

Black, white and green wire in sufficient lengths are needed to connect the Receiver to the Wiegand control panel.

- 22-gauge wire 200 ft. can be run
- 18-gauge wire 500 ft. can be run

Step 1: Install the Wiegand control panel according to the instructions provided with that unit.

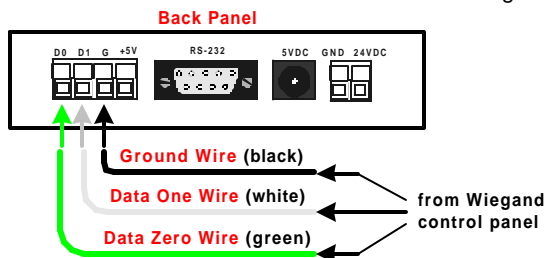
Step 2: Connect the **Ground, Data One and Data Zero** wires



as shown below. Ensure the termination is secure, but not over-tight.



Each Receiver is shipped with a parts box that contains the termination blocks. These termination blocks can be removed from the Receiver for ease of wiring.



Wire the Receiver to the Wiegand control panel carefully. Wiring Ground to a Data terminal can short the Receiver. **DO NOT** wire Data One and Data Zero backward - the data will be garbled.

Step 4: Ensure the Wiegand control panel is wired correctly.

Step 5: Add the Tag IDs and facility codes to the panel's database according to the panel manufacturer's instructions.

2 Connecting to a Serial Device

The Receiver is a DCE (Data Circuit-terminating Equipment) device, and data is output through a DB-9 female RS-232 connector.

Only the following pin assignments are used:

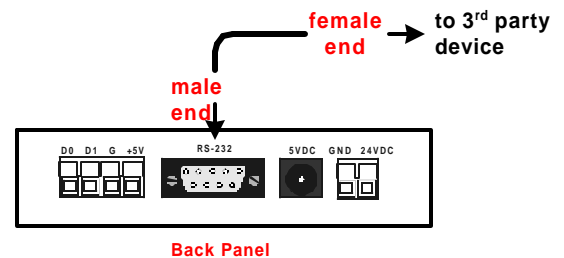
Pin	Description
2	Transmitted Data
3	Received Data
5	Signal Ground

Use a standard one-to-one RS-232 cable to connect the Receiver to a PC or serial device. One end of the cable should be a DB-9 male connector.



DO NOT use a null-modem cable or adapter.

Step 1: Connect the female end (DB-25 or DB-9) of the cable to the 3rd party device and the male end to the Receiver.



Step 2: For the 3rd party device, enter the following port settings.

Baud Rate	19200
Data Bits	8
Parity	None
Stop Bits	1
Flow Control	None

3 Wiring TTL Outputs to TTL Outputs

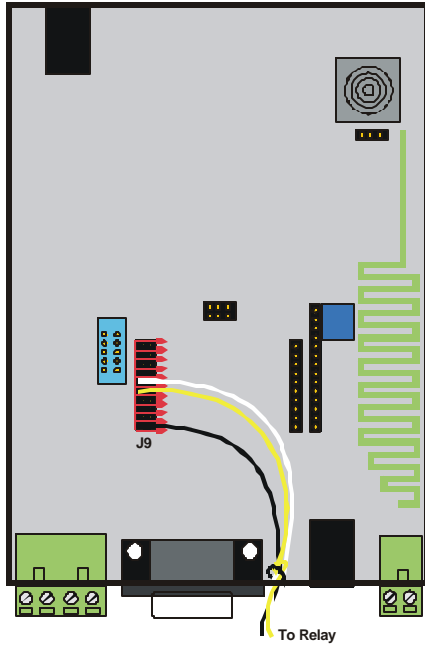
Step 1: Remove the receiving antenna.

Step 2: Remove the nut at the base of the receiving antenna BNC connector.

Step 3: Gently open the case.

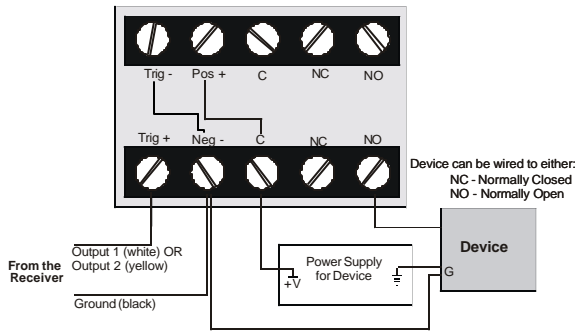
Receiver

Step 4: Place the provided prewired terminal block on the J9 header. Run the wires out the provided hole in Receiver case.



Step 6: Wire an external relay. Altonix RBSN-TTL ultra-sensitive relay module is recommended.

Step 5: Close the case, reattach the nut and replace the receiving antenna.

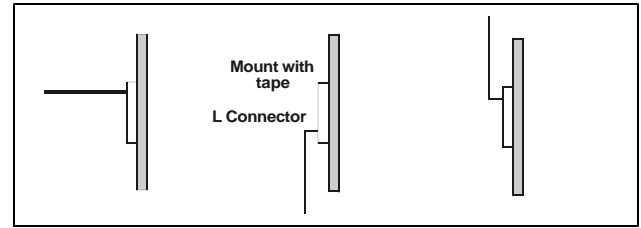


4 Mounting the Receiver

For Best Results:

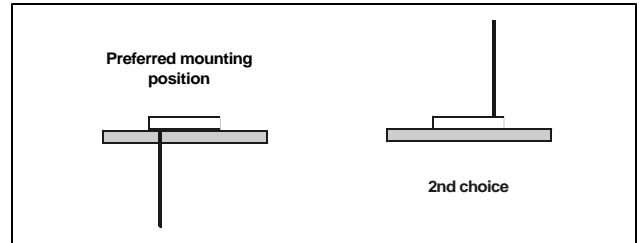
- Receiver should be within 35 ft. of an activated Tag
- Receiving antenna should not be blocked by metal or brick

Wall Mount Positions

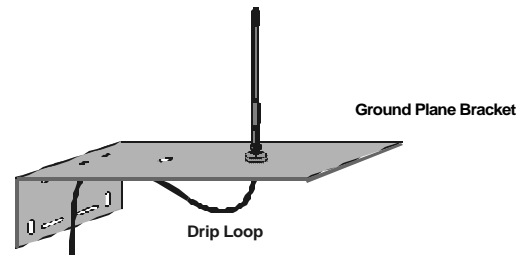


If an L connector is used, the receiving antenna must be positioned **away** from the Receiver.

Ceiling Mount Positions



Mounting Receiving Antenna



The receiving antenna should be **no more** than 25 ft. by cable run from the Receiver.

- Step 1:** Cut coaxial cable with sufficient length to connect the receiving antenna to the Receiver.
- Step 2:** Attach BNC connectors to both ends of the cable.
- Step 3:** Remove the receive antenna from the Receiver.
- Step 4:** Connect one end of the cable to the receive antenna connector on the Receiver.
- Step 5:** Connect the receiving antenna to the top of the ground plane bracket and the other end of the cable to the bottom of the connector. If installed outdoors, ensure that there is a drip-loop in the RG-58 cable below the receiving antenna.
- Step 6:** Position the receiving antenna and ground plane as close as possible to the area where tags are activated.